



# CORNERSTONE

**39<sup>th</sup> Annual Non-Sanctioned Tennis Tournament**  
**Saturday and Sunday August 7<sup>th</sup> - 8<sup>th</sup>**  
**1005 Duke Drive, York, Nebraska**  
**9 Divisions**



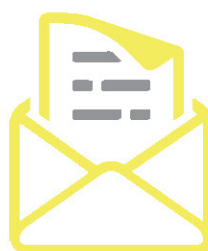
#### TOURNAMENT DATES

Saturday, August 7<sup>th</sup> and  
Sunday, August 8<sup>th</sup>



#### LEVITT TENNIS COURTS

1005 Duke Drive  
York, NE 68467



#### REGISTRATION DEADLINE

Wednesday, August 4<sup>th</sup>  
by 12:00 p.m. (Noon)



#### TOURNAMENT FEES

Singles \$15/per division  
Doubles \$20/per Team

**Pairings will be posted on [cornerstoneconnect.com](http://cornerstoneconnect.com) by 5:00 p.m. on Friday, August 6<sup>th</sup>**

Please mail in your registration form. If you have questions, please contact Mandy Hengelfelt with Cornerstone Bank at (402) 363-7423 or (402) 366-3670 after normal business hours.

#### 9 DIVISIONS (Minimum of 8 Players Per Division)

- MEN'S OPEN SINGLES
- MEN'S 50 & OVER SINGLES
- WOMEN'S OPEN SINGLES
- MEN'S B SINGLES
- MEN'S OPEN DOUBLES
- WOMEN'S B SINGLES
- MEN'S 35 & OVER
- MEN'S 35 & OVER DOUBLES
- WOMEN'S OPEN DOUBLES

#### TOURNAMENT RULES

- Entries limited to one single and one double.
- Super tie breaker if split sets in lieu of 3<sup>rd</sup> set.
- Best of 3 sets - 12pt. tie breaker at 6-all.
- Final classification will be determined by the tournament director.

*Tentative Schedule: Singles starting Saturday morning, followed by doubles mid-morning/early afternoon.*

#### REGISTRATION FORM // DEADLINE AND FEES

Please make checks payable to Cornerstone Bank Tennis Tournament and mail the yellow registration form to the address listed below or emailed to [mhengelfelt@cornerstoneconnect.com](mailto:mhengelfelt@cornerstoneconnect.com)

Cornerstone Bank, Attn. Mandy Hengelfelt  
529 N Lincoln Avenue  
York, Nebraska 68467

# CORNERSTONE

39<sup>th</sup> Annual Non-Sanctioned Tennis Tournament

Saturday and Sunday August 7<sup>th</sup> - 8<sup>th</sup>

1005 Duke Drive, York, Nebraska

9 Divisions



Registration Form Deadline is Wednesday, August 4th by Noon

## Contact Information:

Name: \_\_\_\_\_ Email Address: \_\_\_\_\_

Address: \_\_\_\_\_ City: \_\_\_\_\_ State: \_\_\_\_\_ Phone Number: \_\_\_\_\_

Shirt Size: S M L XL XXL XXXL USTA Rating: \_\_\_\_\_

Do you play in a tennis club or league? ☐ Yes ☐ No If yes, which one? \_\_\_\_\_

## Singles Division: \$15 Entry Fee

☐ MEN'S OPEN SINGLES ☐ MEN'S 35 & OVER SINGLES ☐ WOMEN'S OPEN SINGLES

☐ MEN'S B SINGLES ☐ MEN'S 50 & OVER SINGLES ☐ WOMEN'S B SINGLES

## Doubles Division: \$20 Entry Fee Per Team

Please fill out your partner's information if participating in Doubles.

Partner's Name: \_\_\_\_\_ Shirt Size: S M L XL XXL XXXL

Phone Number: \_\_\_\_\_ Email Address: \_\_\_\_\_

☐ MEN'S OPEN DOUBLES ☐ MEN'S 35 & OVER DOUBLES ☐ WOMEN'S OPEN DOUBLES

Pairings will be posted on [cornerstoneconnect.com](http://cornerstoneconnect.com) by 5:00 p.m. on Friday, August 6th  
Visit our Cornerstone Bank facebook page for more details!

## Payment Options

☐ \$15.00 SINGLES FEE

☐ \$20.00 FULL DOUBLES FEE

☐ \$10.00 HALF DOUBLES FEE

Select "half" if your partner will be mailing in a separate registration with their payment.

Total Amount Due \$ \_\_\_\_\_

☐ Payment Enclosed ☐ Paying Day of Event



Make checks payable to:  
Cornerstone Bank Tennis Tournament



Mail or Email your registration form to:  
Cornerstone Bank  
Mandy Hengelfelt  
529 N Lincoln Ave  
York, NE 68467



Email: [mhengelfelt@cornerstoneconnect.com](mailto:mhengelfelt@cornerstoneconnect.com)  
Phone: (402) 363-7423